



SKYPOST **PM FG**



SAMPLE PM EVERYWHERE





Sequential Station for Particulate Matter

SKYPOST PM FG

MAIN CHARACTERISTICS

- Compliant with EN12341:2014
- 16 filter capacity
- weather proof, operative temperature from -20°C up to 50°C
- Maintains sampled filters temperature bellow 23°C with external temperature up to 50°C.
- Electronic flow rate control
- Measuring sensors for:
 - Atmospheric pressure
 - Pressure drop on filter
 - Ambient temperature
 - Dry gas meter temperature
- Volumetric measurement with dry gas meter within $\pm 2\%$ precision
- Sampling probe ventilation system, to guarantee a differential temperature between the filter and the sample inlet of max. 5° C, in accordance with EN12341:2014
- Data download via Ethernet and USB ports.
- Sample conditioning signal for:
 - wind direction*
 - external signal * (i.e. rain)
- Built-in printer



MAIN APPLICATIONS

- Total particulate matter
- PM10 and PM2.5 sampling according to EN12341:2014
- PM1
- Heavy metals
- VOC in TSP, PM10 and PM2.5 sampling

DESCRIPTION

Skypost PM FG is an automatic outdoor station for continuous atmospheric particulate monitoring using 47mm diameter filter membrane.

The sequential substitution system of the filtering membrane with 16 membranes capacity and the electronic flow rate controller, allow continuous, unattended operations as well as an easy replacement of the exposed filters without interrupting the sampling.

Skypost PM FG has up to 50 l/min flow rate capacity and is suitable for dust sampling with LVS PM10 2.3 m³/h sampling head and LVS PM2.5 2.3 m³/h sampling head, according to EN1234:2014 norm.

The modularity of the sampling head allows to use the USEPA 40, CFR Part 50 sampling head as well.

The completely straight suction tube with its round shape and the separation of the storage filter zone from internal and radiant source of heat, allow to collect and keep the integrity of the pollutants.

A ventilation and differential thermoregulated heating system allows the instrument to operate even in extreme ambient conditions.



BUILT FOR FIELD SAMPLER

Skypost PM FG is a standalone sampler built into a weatherproof cabinet made to work outdoor in the most extreme conditions. A test made by an ISO 17025 certified lab showed its ability to work with external temperature from -20°C to 50°C.

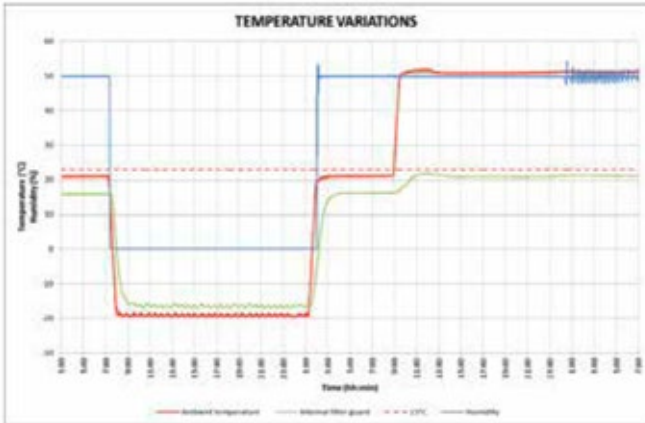


FILTERGUARD TECHNOLOGY

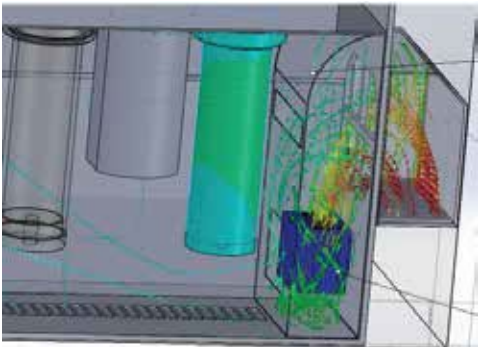
FilterGuard is the cooling system for sampled filters reservoir of Skypost, designed according to EN 12341:2014 requirements.

FilterGuard technology thanks to its smart temperature control gives an optimal protection of sampled filters avoiding their exposition to heat and to condensates.

Its ability to maintain filters below 23°C with external temperature up to 50°C has been tested by an independent ISO 17025 certified lab



Results of tests in climate chamber performed by ISO 17025 lab



FilterGuard is design to gives an homogeneous cooling without cool point

DATA MANAGEMENT

Skypost PM FG has a new data management system with following features:

- continuous sampling data storage
- min., max and average values of all the measured data
- Alarm management
- Data download via USB and Ethernet cable
- Data export into Excel files



View of FilterGuard into Skypost PM FG

TECHNICAL CHARACTERISTICS

Flow rate range	10 - 50 l/min
Pump type	Rotary vane 6m ³ /h
Operative conditions	-20 to +50°C
Cooling system	Electronically controlled calories removal
Dimensions (b x p x h)	450 x 510 x 610 mm
Weight	45 kg
Instrument	
220 Vac ± 10% 50/60 Hz	AA99-014-0050SP
90-130 Vac ± 10% 50/60 Hz	AA99-014-0051SP
Telescopic tripod	AA99-014-9906SP



TCRTECORA[®]

POLLUTION CHECK



4



+39 02 3664 8635



info@tcrtecora.com



www.tcrtecora.com



Via delle Primule, 16
Cogliate (MB), 20815, Italy